



WINDOW TECHNOLOGY
 DOOR TECHNOLOGY
 AUTOMATIC ENTRANCE SYSTEMS
 BUILDING MANAGEMENT SYSTEMS

4289



GRETSCH-UNITAS GROUP



GUSG CATALOGUE



Securing technology for you
Vorsprung mit System





EM-86 automatic sliding door. With permissible door leaf weights of up to 120 kg (**special application max 150kg**) Well - engineered, proven mechanics, Self - learning controller, thanks to the use of strong and durable double rollers. EM-86 automatic sliding door operator not only guarantees a cost effective system but also proven to be robust and reliable.

G-U code	Description / Colour
L-15202-043	EM-86/1 kit only (single leaf use)
L-15202-044	EM-86/1 kit only (double leaf use)



Technical data

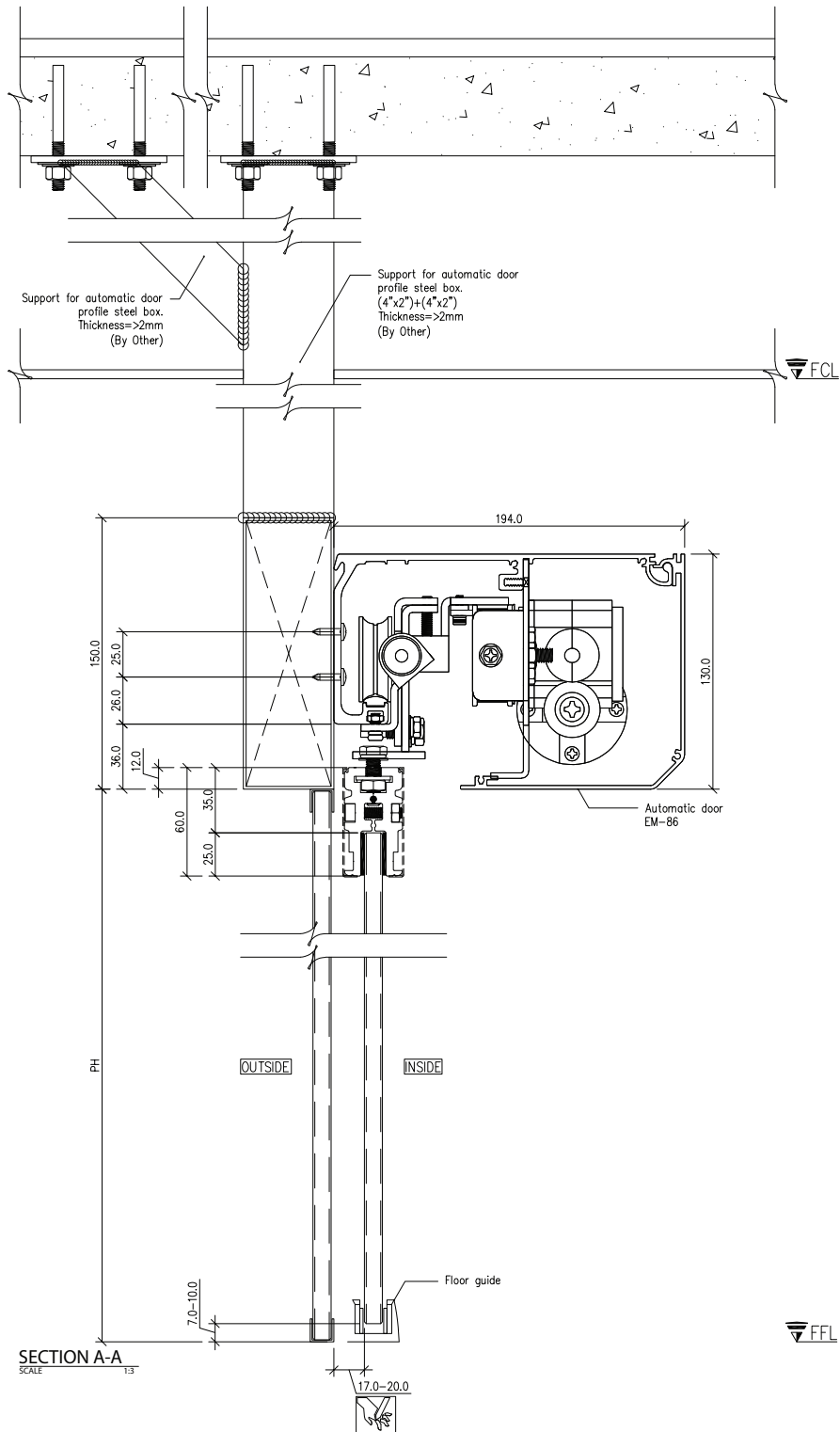
Description	EM-86	
	1-Leaf	2-Leaf
Clearance width	700-1800 mm.	900-2800 mm.
Door leaf weight	Max. 150 kg/Leaf	Max. 140 kg/Leaf
Supply voltage	~230V AC; ±10% 50 Hz	
Power consumption	Max 160 VA (50 VA during operation)	
Opening Speed	Max. 0-10 m/s	
Closing Speed	Max. 0-10 m/s	
Winter Opening	10% ~ 90% of clear passage width (Open distance Min.500)	
Protection Class / Ambient Temperature	IP 22	
1. Standard dimension, taking into account the overall measurement, the ratio of height and width and the local installation conditions; special solution on request 2. The mandatory escape route width must be observed		

AUTOMATIC ENTRANCE SYSTEM

EM-86



Drawing





WINDOW TECHNOLOGY
DOOR TECHNOLOGY
AUTOMATIC ENTRANCE SYSTEMS
BUILDING MANAGEMENT SYSTEMS

Gretsch-Unitas (Singapore) Pte. Ltd
1, Kaki Bukit Road 1, #03-27/28
Enterprise One
Singapore 415934
Tel. +65 9336 6321
Fax +65 6297 3584
kane.soh@g-u.com.sg
www.g-u.com.sg

Official Distributor List

Tiki International Enterprises Pte Ltd
73 Loyang Way
Singapore 508763
Tel. +65 6283 1178
admin@tiki.com.sg
www.tiki.com.sg



Securing technology for you
Vorsprung mit System

